



FABIO ALEMANNO DESIGN

SQUARE BED

OPERATIONAL MANUAL



INFRARED HEATED MARBLE SCULPTURES

CONTENTS

<i>SAFETY INFORMATION</i>	<i>pg.3</i>	<i>HEATING SYSTEM</i>	<i>pg.15</i>
<i>INTRODUCING THE SQUARE BED</i>	<i>pg.8</i>	<i>AMBIENT LED LIGHTING</i>	<i>pg.16</i>
<i>TECHNICAL SPECIFICATIONS</i>	<i>pg.9</i>	<i>MARBLE CARE</i>	<i>pg.18</i>
<i>INSTALLATION</i>	<i>pg.10</i>	<i>SKAI LEATHER CARE</i>	<i>pg.19</i>
<i>GROUND INTERFACE</i>	<i>pg.13</i>	<i>LACQUER CARE</i>	<i>pg.20</i>
<i>FEATURES TABLE</i>	<i>pg.14</i>		

SAFETY INFORMATION

SQUARE BED

Please read fully and carefully the following safety information and instructions before you operate your Fabio Alemanno Heated Marble Sculpture. Please ensure this manual is available to all users of your Fabio Alemanno Heated Marble Sculpture, and that it has been read and understood prior to use.

This information serves for the protection of the operator. Ignoring this safety information and instructions will endanger your health and life, as well as the health and life of your clients. Please keep this manual in a safe location in order to be able to consult it whenever needed throughout the equipment's service life.

Fabio Alemanno Design shall not be held responsible for any damages, direct or indirect, caused to people or property resulting from negligence or non-compliance with these instructions.

Should you need to dispose of your Fabio Alemanno Heated Marble Sculpture, please first render it inoperative. Unplug the sculpture and cut off the entire power cord. Dispose of the power cord and the plug immediately.

DANGER | To reduce the risk of electrocution:

1. Non-compliance of the orders of this instruction manual will endanger the life and health of the operator and / or can result in damages to the appliance.
2. All electrical work to connect your Fabio Alemanno Heated Marble Sculpture to the mains must be carried out by a qualified professional. Do not modify the energy supply. The connection must be carried out in accordance with the current local and legal regulations. RISK OF ELECTRIC SHOCK!
3. The technical data of your energy supplier must meet the data on the rating plate of your Fabio Alemanno Heated Marble Sculpture.
4. Do not modify the plug provided, if it will not fit the outlet, have a proper outlet installed by a qualified electrician (not covered by the guarantee).
5. Do not connect your Fabio Alemanno Heated Marble Sculpture to the mains if the appliance itself or the power cable or the plug are visibly damaged. RISK OF ELECTRIC SHOCK!

SAFETY INFORMATION

SQUARE BED

6. The power supply cable shall not be placed below your Fabio Alemanno Heated Marble Sculpture, unless it is expressly permitted by the manufacturer. RISK OF ELECTRIC SHOCK!

7. The power cord must not be placed near the motor during connection or repositioning as it can be damaged while operating the motor.

RISK OF ELECTRIC SHOCK!

8. Never try to repair your Fabio Alemanno Heated Marble Sculpture yourself. If it does not operate properly, please contact us. Original spare parts should be used only.

9. When the power cable and / or the plug are damaged, it must be replaced by us or a qualified professional only. Never try to repair or replace the power cable and / or the plug yourself. RISK OF ELECTRIC SHOCK!

10. Always unplug your Fabio Alemanno Heated Marble Sculpture if it is not used for a longer period of time.

11. Always disconnect your Fabio Alemanno Heated Marble Sculpture from the mains before cleaning and /or maintenance. RISK OF ELECTRIC SHOCK!

12. Never pull the power supply cable to unplug the appliance. Always use the power plug itself to unplug the appliance. RISK OF ELECTRIC SHOCK!

13. Never touch the power plug, the power switch or other electrical components with wet or damp hands. RISK OF ELECTRIC SHOCK!

WARNING | To reduce the risk of burns, electrocution, fire or injury to persons:

1. Use a properly-grounded socket with proper voltage (230 V AC) only.

2. The electric components must not come in contact with water. RISK OF ELECTRIC SHOCK!

3. Check all cables regularly and contact us when any cable is in improper condition. RISK OF ELECTRIC SHOCK!

SAFETY INFORMATION

SQUARE BED

4. The appliance must not stand on the power cord. Ensure that the cord is not damaged when moving the appliance. Do not step on the cord. Do not stretch the cord.

5. Always ensure that the power cord is not bent or squeezed during installation.

6. Do not use any extension cords, multiple sockets or adapters.
RISK OF FIRE!

7. Do not open the housings of the electric control panels! RISK OF ELECTRIC SHOCK!

8. Liquids must not get into the electric control panels. RISK OF ELECTRIC SHOCK!

9. For long periods of use, always keep some free space between the back and seat upholstery. RISK OF BURNS DUE TO HEAT ACCUMULATION!

10. Persons suffering from acute pain, venous disorders, low blood pressure, inflammatory processes and other pathologies which make heat-treatments or the positioning of the patient inappropriate must consult the doctor before treatment.

11. Persons who are treated on the Fabio Alemanno Heated Marble Sculpture must not be under the influence of intoxicating substances (e.g. alcohol, drugs or medicine).

12. Close supervision is necessary when your Fabio Alemanno Heated Marble Sculpture is used by, on, or near children or disabled people.

13. Use your Fabio Alemanno Heated Marble Sculpture only for its intended use as described in this manual. Do not use attachments / accessories not recommended by the manufacturer.

14. Never operate your Fabio Alemanno Heated Marble Sculpture if it has a damaged cord or plug, if it is not working properly, if it has been damaged or if it has become wet.

15. Remove possible dust accumulation at the power plug, at the safety power socket and at all plug connectors regularly.
RISK OF FIRE!

16. Keep the cord away from heated surfaces.

17. Never drop or insert any object into any opening.

SAFETY INFORMATION

SQUARE BED

18. Do not allow any unauthorised person to operate your Fabio Alemanno Heated Marble Sculpture.

19. Use your Fabio Alemanno Heated Marble Sculpture only on a level surface.

20. Any repairs and maintenance work must be carried out by qualified professionals authorised by Fabio Alemanno Design only! RISK OF ELECTRIC SHOCK! RISK OF FIRE!

21. Do not use a steam cleaner for cleaning.
RISK OF ELECTRIC SHOCK!

22. Never rest or stand on any part of the lying surface or of the supporting structure of your Fabio Alemanno Heated Marble Sculpture. Do not exert strong physical forces on these components; otherwise you can damage the supporting structure permanently. RISK OF TIPPING! RISK OF BREAKAGE! RISK OF INJURY!

23. Persons, animals or body parts of persons and animals must not be positioned between the base and the upper structure.
RISK OF CRUSHING!

24. Ensure that no parts of the body or items are between the parts of your Fabio Alemanno Heated Marble Sculpture while adjusting the lying position. RISK OF CRUSHING!

25. Do not use the supporting structure as a foot rest.
RISK OF CRUSHING!

26. While unpacking, the packaging materials (polythene bags, polystyrene pieces, etc.) should be kept away from children and pets. RISK OF INJURY! CHOKING HAZARD!

27. Always keep children and pets away from your Fabio Alemanno Heated Marble Sculpture.

28. Children must not play with your Fabio Alemanno Heated Marble Sculpture or its single components.

29. The Fabio Alemanno Heated Marble Sculpture is not intended to be operated by persons with reduced physical, sensory and mental capabilities or lack of experience or knowledge, unless they are supervised or instructed concerning the use of the appliance and do understand the danger resulting thereof.

SAFETY INFORMATION

————— *SQUARE BED*

NOTICE

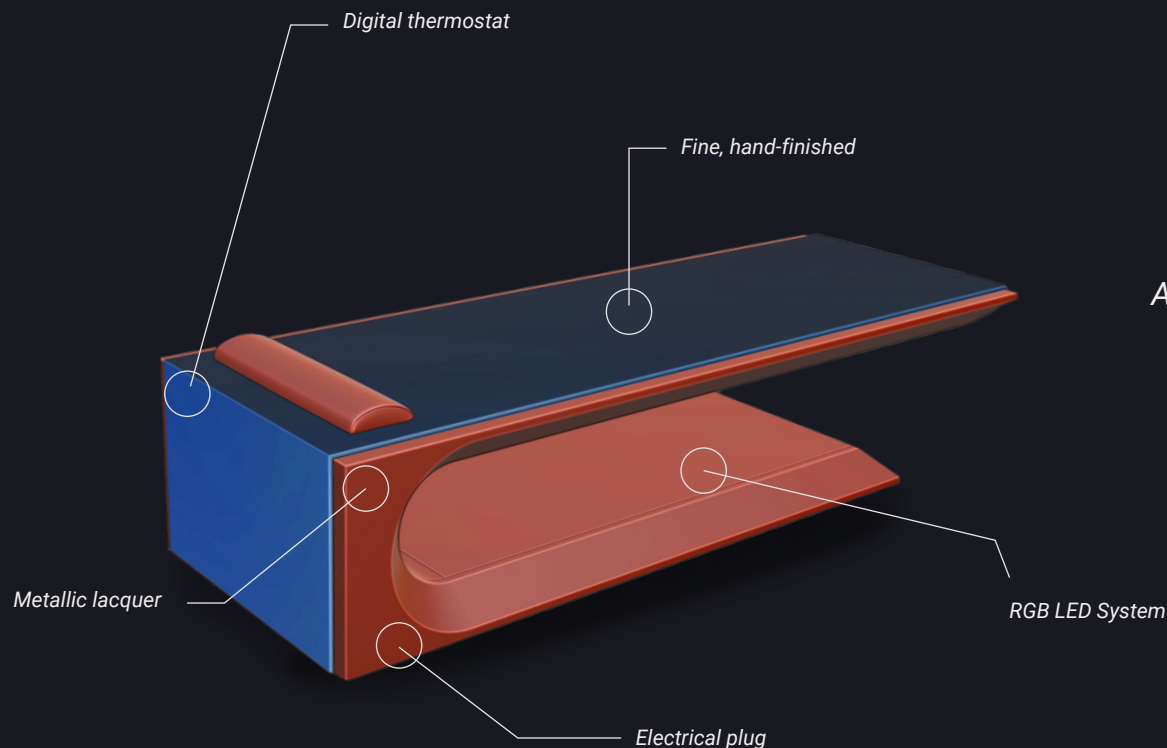
1. For safety reasons, your Fabio Alemanno Heated Marble Sculpture moves only while pressing a key of the manual control panel. When you stop pressing, all moving-operation will stop immediately.
2. The additional lock of the armrests must be released to adjust the armrests using the respective levers. Otherwise the construction and the mechanics of the armrests can be damaged permanently. RISK OF DAMAGE!
3. The rating plate must not be removed or made illegible. Non-compliance will expire the guarantee!

Thermotherapy in its most elegant form

Welcome to a new concept in wellness.

Our Square Bed is a first of its kind, uniting the powerful healing benefits of infrared with unparalleled comfort and quality.

Its unique synergy of innovative design, masterful engineering and exquisite marble sculpturing creates a true work of art and wellbeing - enriching every environment it's placed in to deliver enhanced relaxation and rejuvenation like no other.



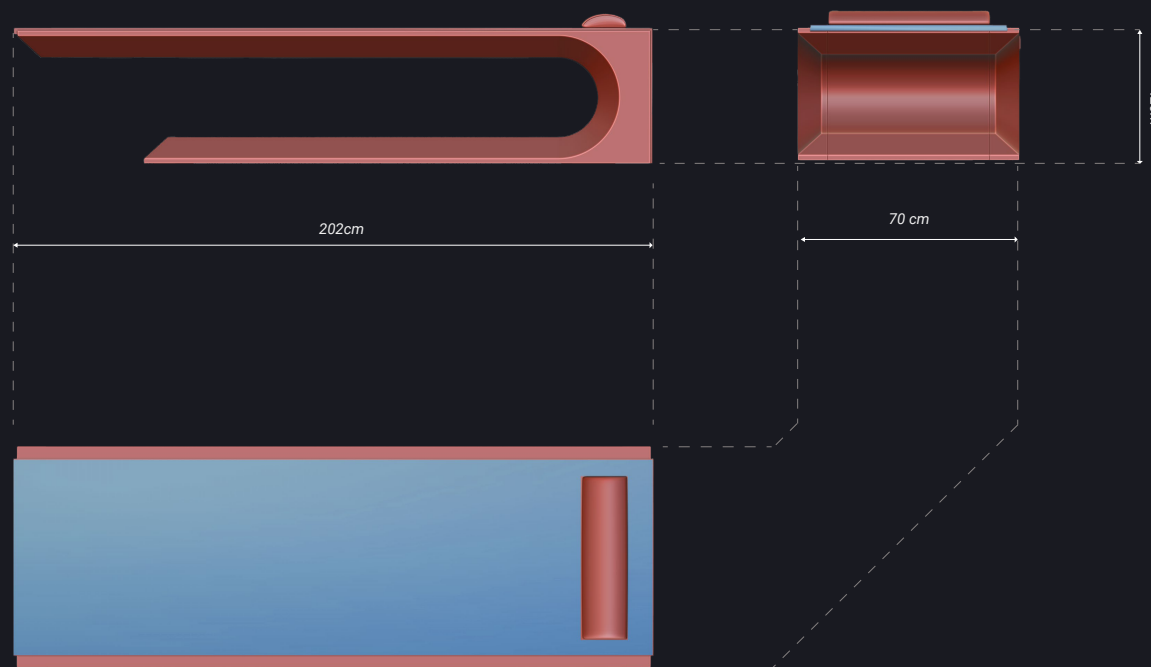
- Carved from a single marble block
- Supported by an underlying metal construction
- Ergonomically designed
- Internal radiating heat system up to 105°F/41.5°C
- Suitable for both indoors and outdoors
- Maintenance free, minimising future costs

Available in a range of colours and finishes, including limestone and white or black marble. Many more available on request.

TECHNICAL SPECIFICATIONS

SQUARE BED

Construction base:	Rust-free
Base covering:	Fibreglass
Covering finish:	Metallic lacquer
Dimension:	L: 202cm; W: 70cm; H: 42cm L: 6' - 7 $\frac{1}{2}$ " in; W: 2' - 3 $\frac{1}{2}$ " in ; H: 1' - 4 $\frac{1}{2}$ " in
Package dim:	L: 210cm; W: 80cm; H: 110cm L: 6' - 10 $\frac{5}{8}$ " in; W: 2' - 6 $\frac{3}{4}$ " in; H: 2' - 7 $\frac{1}{2}$ " in
Ship weight:	110kg; 242lb
Crate weight:	140kg; 309lb
Total weight:	250kg 551lb



General protection:	IP54 - IP67
Temperature:	Up to 41.5°C/105°F
Heated area standard:	1 zone holohedral
Heating system standard:	Electric space heating cables
Voltage standard system:	220-240V/800W; 110-120V/950W
Thermostat:	Digital; IP65 UL-TÜV approved
Power outlet:	European Bosch standard ; IP54
Lift for automatic tilting:	Linear actuators; UL-TÜV approved; IP65
Certifications:	UL-TÜV approved components

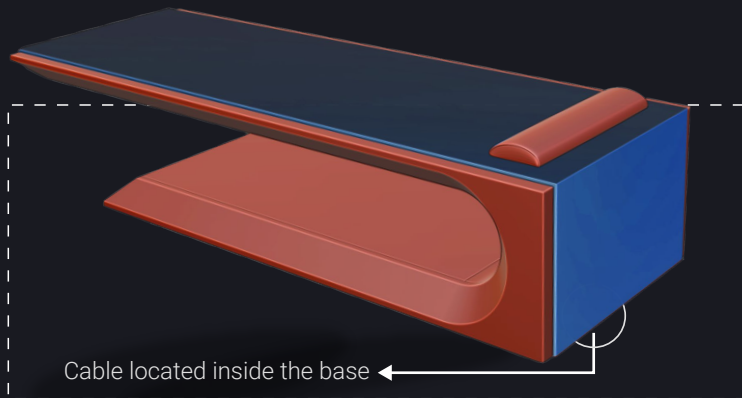
INSTALLATION

INTEGRATED CABLE

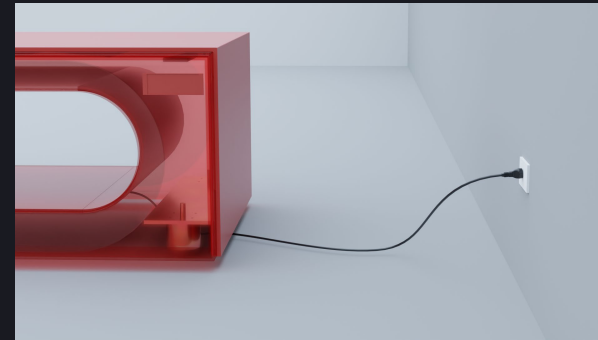
Connect your Square Bed to an earthed power socket.

We do not accept liability for any loss or damage to people or property arising from the failure to connect the earth line.

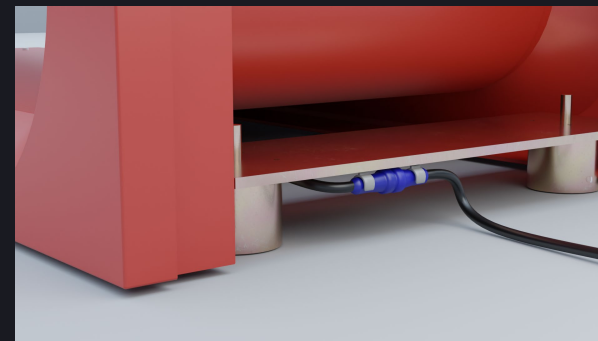
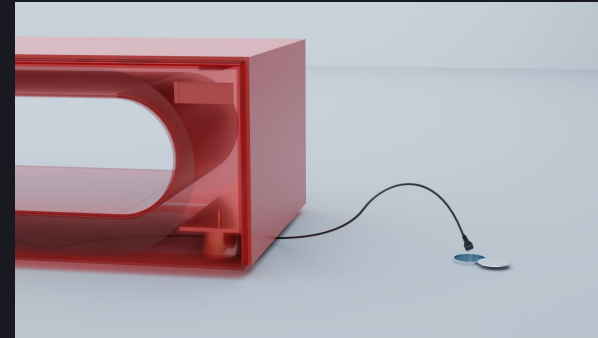
Our products are designed for single-phase alternating current 230V 50Hz or, if required, 110V 60 Hz operation.



① WALL PLUG



② FLOOR PLUG OUT OF THE BASE



PLUG OPTIONS



UK type G



EU type Bosch



USA type B

For your convenience, we offer the choice of connecting to the power socket either inside or outside of the base.

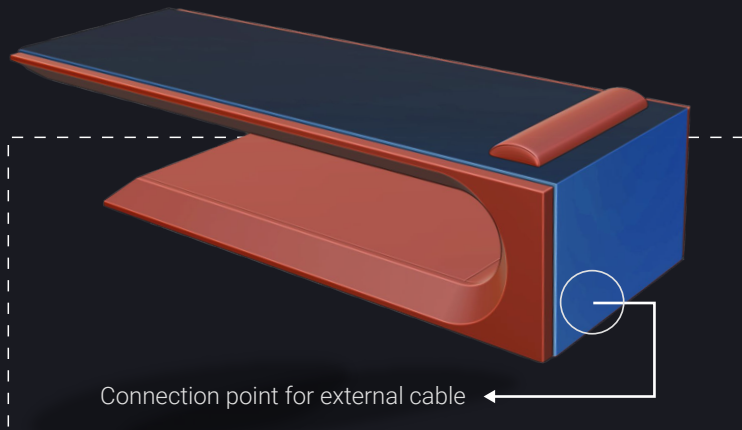
INSTALLATION

EXTERNAL CABLE

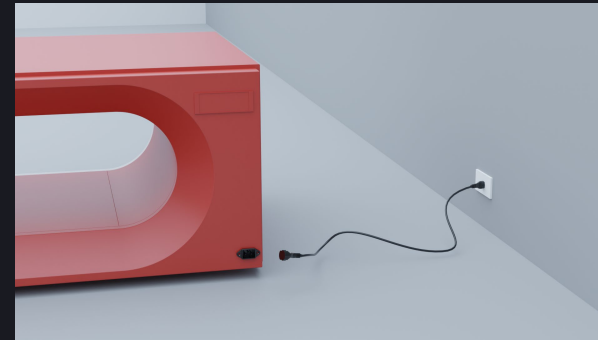
Connect your Square Bed to an earthed power socket.

We do not accept liability for any loss or damage to people or property arising from the failure to connect the earth line.

Our products are designed for single-phase alternating current 230V 50Hz or, if required, 110V 60 Hz operation.



① WALL PLUG



② FLOOR PLUG



PLUG OPTIONS



UK type G



EU type Bosch



USA type B

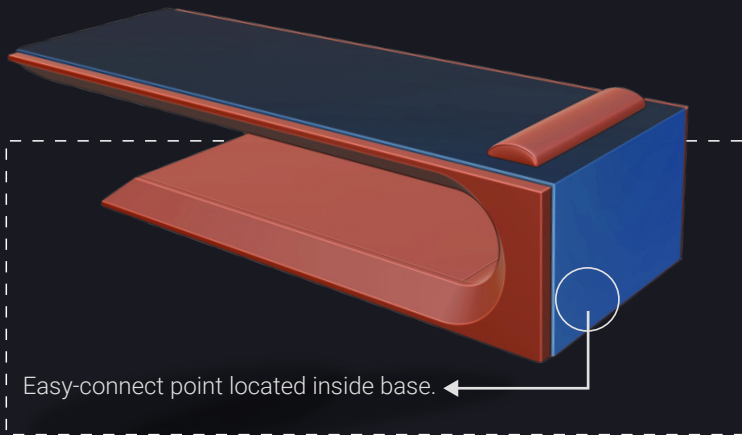
INSTALLATION

INTEGRATED, EASY-CONNECT CABLE

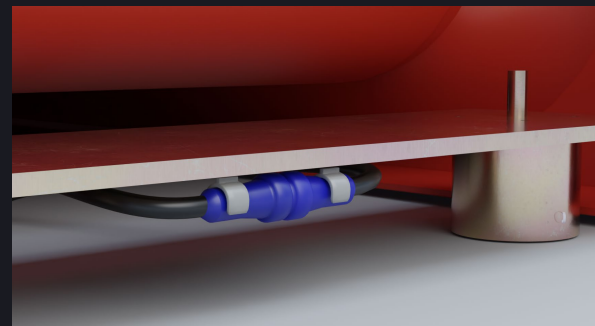
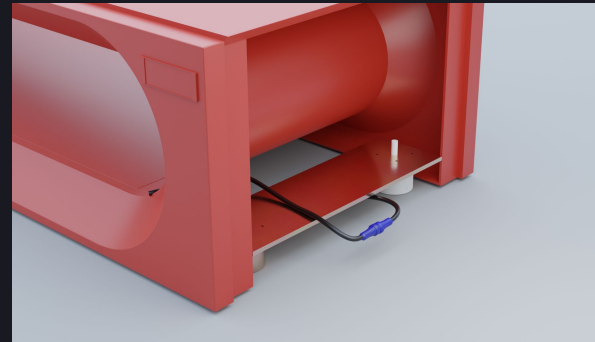
Connect your Square Bed to an earthed power socket.

We do not accept liability for any loss or damage to people or property arising from the failure to connect the earth line.

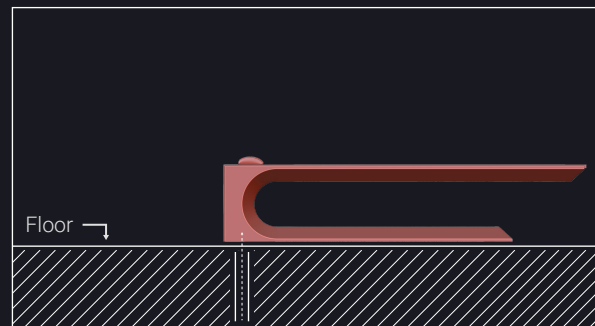
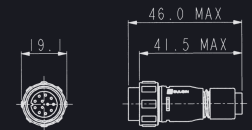
Our products are designed for single-phase alternating current 230V 50Hz or, if required, 110V 60 Hz operation. They also pass IP67 regulations, confirming their safe use in wet areas and poolside.



① WALL PLUG



PLUG TYPE



Electrical conduit in the floor

For ease of access and to ensure optimal aesthetics all integrated wiring and connection points are accessible via a removable panel in the base of the heated bed.

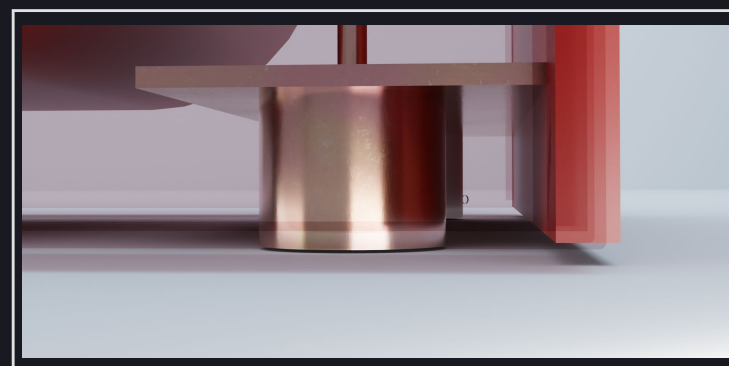
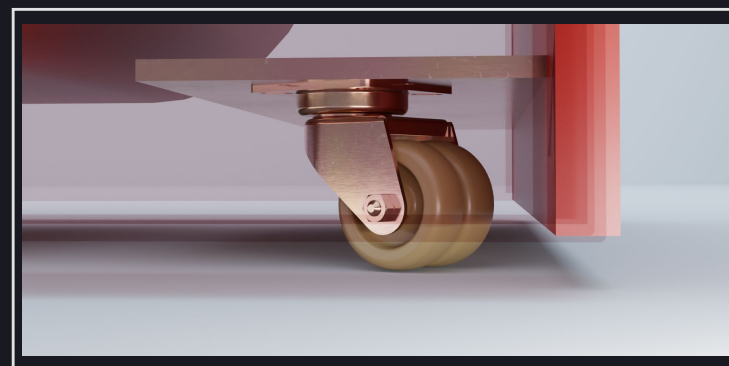
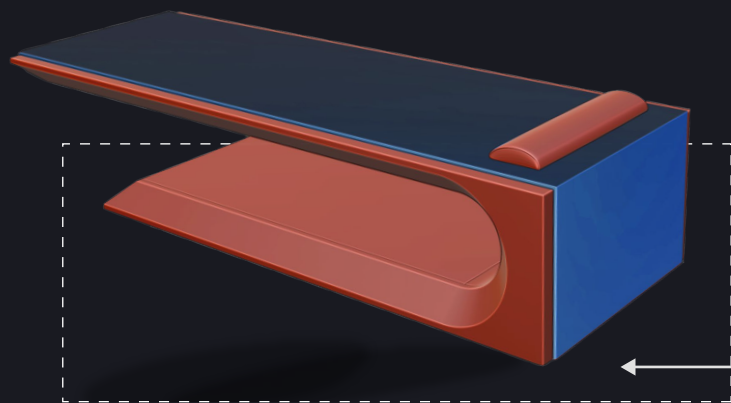
GROUND INTERFACE

SQUARE BED

For ease of integration and use in every environment, we offer two flooring interface options for our heated bed.

1 - PROTECTIVE RUBBER WHEELS

2 - PROTECTIVE RUBBER FEET
(NOT RECOMMENDED FOR PUBLIC SPAS)



FEATURES TABLE

SQUARE BED

- Contemporary beautiful design, carved from a single marble block
- Joint-free, for a hygienically perfect marble surface
- Ergonomic design and handcrafted silky-smooth surface provide unparalleled comfort
- High quality, robust and mobile construction
- Unlimited applications and options via different models
- Supremely easy Plug in & Play installation. No further technical or monetary investment required
- Digital thermostat allowing for temperatures up to 41.5°C/105°F
- Enhances body's innate regenerative processes through warmth
- Electro-smog-free heating system
- Protective rubber feet for freedom of use and mobility on floors
- Suitable for use in outdoor and wet areas (IP54)
- Minimal maintenance costs
- Made in Germany, TÜV-UL approved
- 5-year guarantee for all electronic and mechanical components

--->

MODELS	MARBLE	LEATHER	LACQUER	FEATURES					
				HEATING SYSTEM	INCLINATION	ARMRESTS	RGB LED	ELEVATION	INTEGRATED SHOWER HEAD-HOSE
CLEOPATRA									
CLASSICO	●	●	●	●	●	●	●		
MODERNO	●	●	●	●	●	●	●		
BASICO	●	●	●	●			●		
DIVA									
CLASSICO	●	●	●	●	●	●	●		
MODERNO	●	●	●	●	●	●	●		
BASICO	●	●	●	●			●		
CERAMICO									
CLASSICO	●	●	●	●			●		
MODERNO	●	●	●	●			●		
BASICO	●	●	●	●			●		
MUSIVO									
CLASSICO	●	●	●	●			●		
MODERNO	●	●	●	●			●		
BASICO	●	●	●	●			●		
CAESAR	●	●	●	●	●	●	●		
SQUARE TABLE	●	●	●	●			●	●	●
SQUARE BED	●	●	●	●			●		

HEATING SYSTEM

SQUARE BED

Square Bed's high performance digital thermostat was precisely engineered to enable easy and instant temperature changes up to 41.5°C/105°F.

At a high maximum electric load of 16A(ohm) and 6A (inductive), it is able to operate in most cases without a cut-out relay.

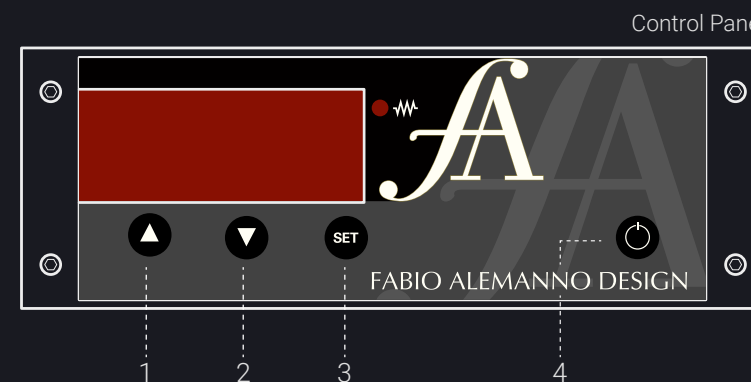
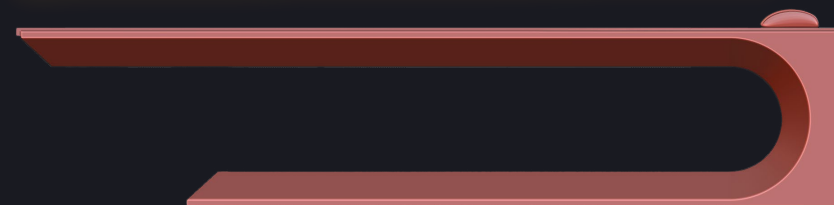
There are four easy-to-use control points on the thermostat. One switches the thermostat on or off and three enable setting adjustments to be made.

Setting temperature parameters

If no keys are pressed, the display screen indicates current bed temperature. Press the SET key to show the set point on the display screen.

To change the set point, hold down the SET key while using the UP or DOWN keys.

Please note that the set point can only be changed within range limits of 10°C – 41.5°C.



KEY 1: UP

Press to increase the parameter or parameter value or scroll through the parameter list.

KEY 2: DOWN

Press to decrease the parameter or parameter value or scroll through the parameter list. If buzzer alarm sounds, turn off by pressing this key.

KEY 3: SET

Press to show the set point or hold it down to set new parameters.

KEY 4: STANDBY

Press to switch the thermostat on or off.

AMBIENT LED LIGHTING

SQUARE BED

● LED OPTION

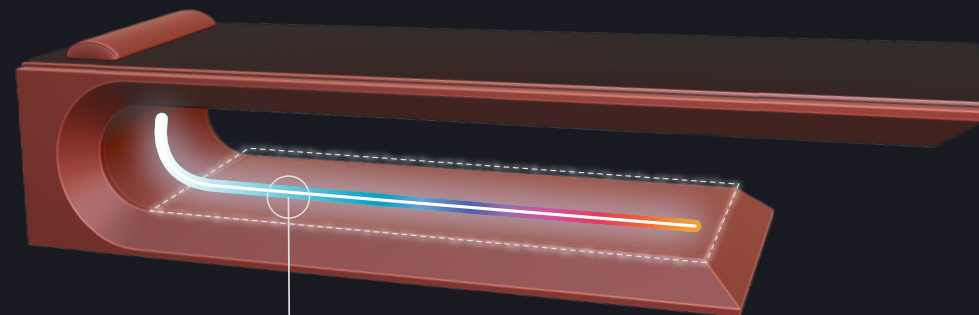
Elevate the ambiance and experience of your heated bed by adding an LED light system into the sculptured marble.

Options:

Single white LEDs (2,700-5,000 Kelvin)

RGB white LEDs (3,000-5,000 Kelvin)

Lighting strips are concealed and wirelessly operated via Casambi control.



2700 K°



5000 K°



RGB



Control remote

CASAMBI

Download

RGB LED- Control remote

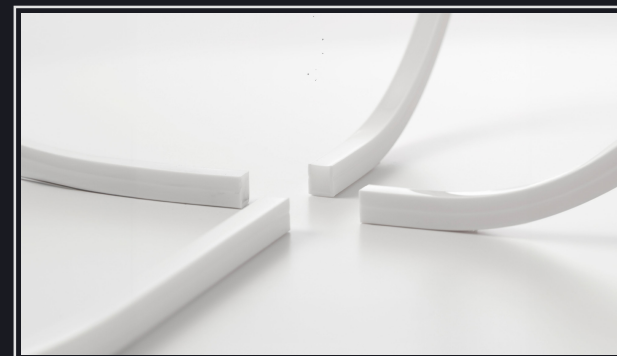
Extensive Casambi ecosystem enables a complete end-to-end solution. **Casambi** collaborates with leading designers and luminaire, driver and lighting control module manufacturers.

AMBIENT LED LIGHTING

SQUARE BED

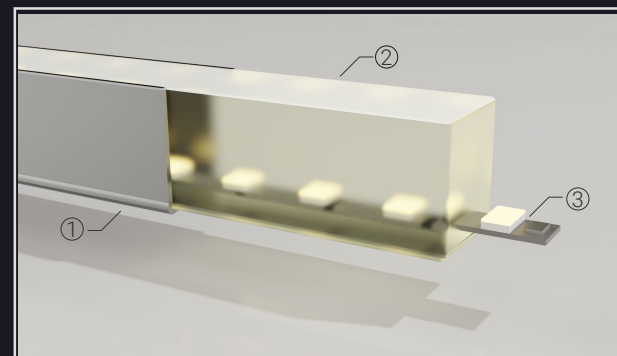
① PVC outer case

Made in Italy to exacting composition standards, the PVC outer case offers flexibility with good resistance to tension and bending.



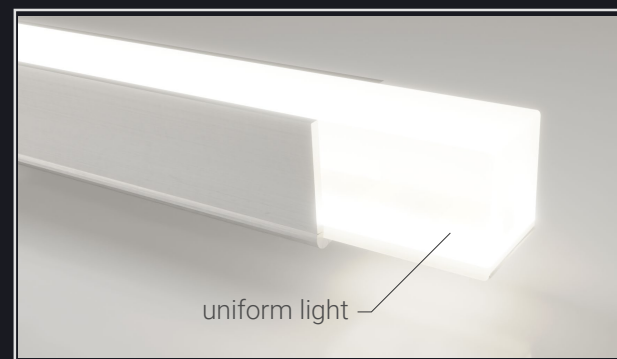
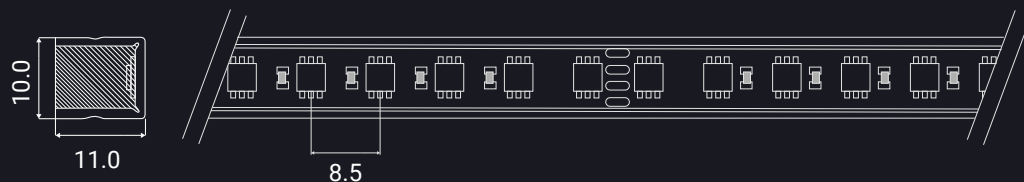
② Polyurethane resin UV treatment

The PETERS® bi-components polyurethane resin UV treatment is a highly transparent and protective component with UV filtration and anti-yellowing benefits. Automated for controlled colour diffusion.



③ LED Strip - LL RGB3

Designed and made in Italy. Inserts into the outer case and offers optimal colour diffusion.



MARBLE CARE

SQUARE BED

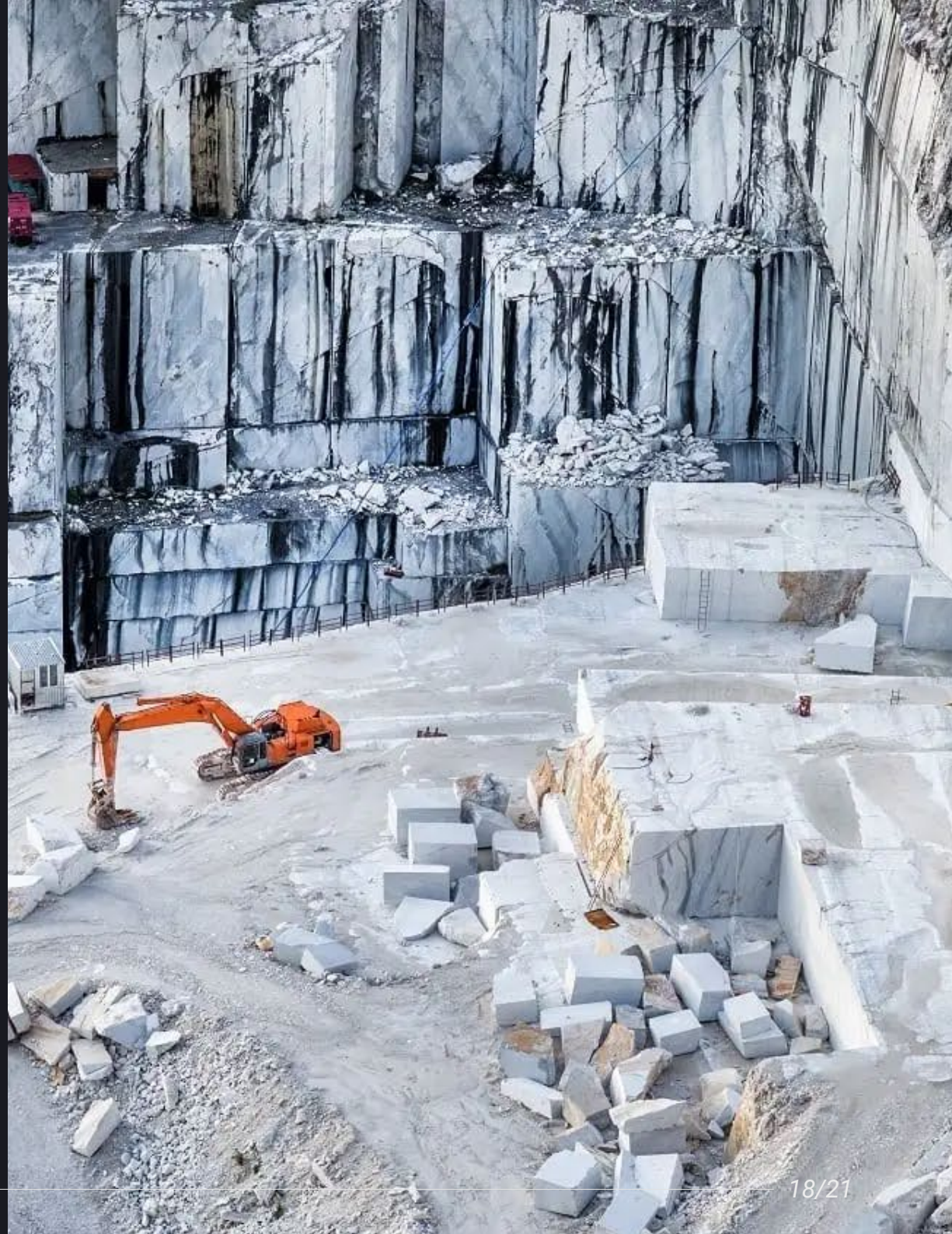
Please clean your natural stone or marble heated bed using only specific, marble-friendly care products.

We recommend:

MN-Easy-Clean from LITHOFIN

Do not spray cleaner directly onto heated surface.

1. Apply product onto a microfibre cloth, then use to clean the surface.
2. If dirt is present on the surface, slightly dampen microfibre cloth before use.
3. Wipe surface dry afterwards to avoid streaking.



SKAI LEATHER CARE

— *SQUARE BED*

Please clean your Skai Leather Headrest using only specific, leather-friendly care products.

Do not spray cleaner directly onto Skai Leather.

1. Apply product onto a microfibre cloth, then use to clean the headrest.
2. If dirt is present on the surface, slightly dampen microfibre cloth before use.
3. Wipe surface dry afterwards to avoid streaking.



LACQUER CARE

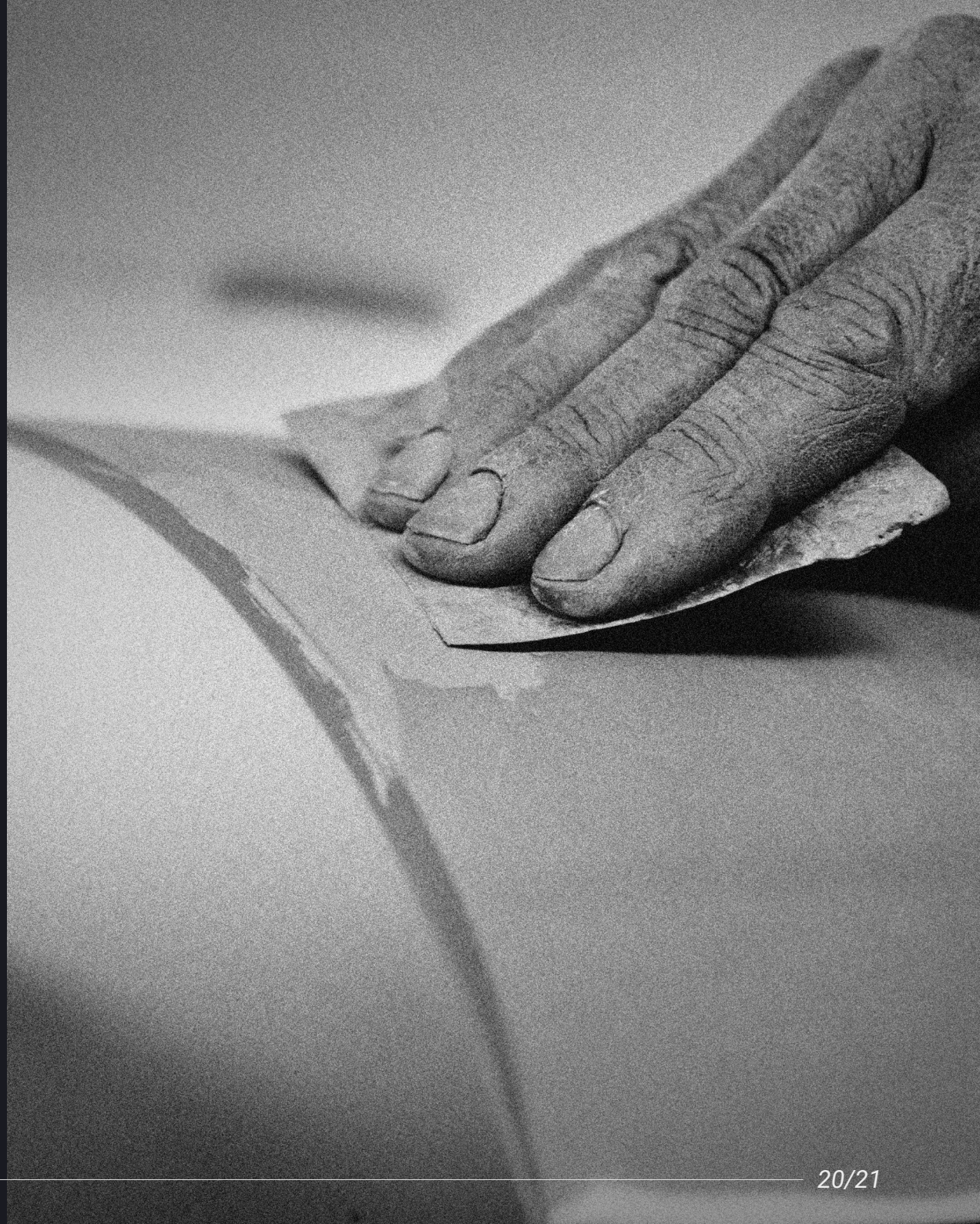
SQUARE BED

Please clean all lacquered surfaces using only non-aggressive products designed for plastic surfaces.

Avoid using any cleaning cloths that may scratch or damage the surface. We recommend a damp microfibre cloth is used.

Do not spray cleaner directly onto lacquered surface.

1. Apply product onto a dampened microfibre cloth, then use to clean the surface.
2. Wipe surface dry afterwards to avoid streaking.



FABIO ALEMANNO DESIGN

ITALIAN TRADITION, CRAFTSMANSHIP, INNOVATION & WELLBEING



FABIO ALEMANNO DESIGN

Our factory in southern Italy uses the finest traditional craftsmanship alongside cutting-edge technologies. Through this, we design and create flawless, beautiful and one-of-a-kind products that satisfy the refined tastes of the most demanding customers around the world while also enhancing their wellbeing.

Expertise, attention to detail and passion are at the heart of every project - fuelling our mission to help make our customers' dreams come true.